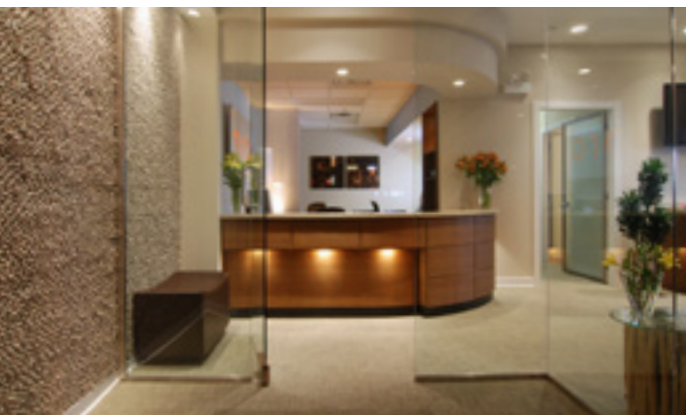




Doctors who updated their practice experienced an average **38% increase** in performance year 1 and another **38% improvement** year 2



# Inspiring Success:

## Expand Your Practice Vision

Learn how to expand your practice vision with dental office design leader, author, editor and speaker, Dr. Mark Tholen, DDS, MBA.

This two-day Continuing Education (CE) program offers practical steps and valuable insight to create an optimal practice design, and discuss common pitfalls in a remodeling and construction project.

Each conference participant will have the opportunity for an individual consultation with Dr. Tholen, where office project next steps will be crafted.

### Program Date(s):

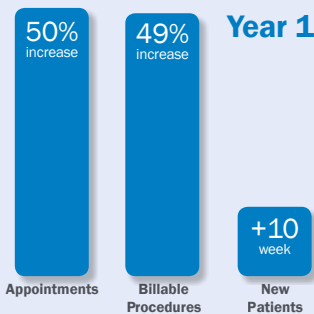
October 26-27, 2018  
Newberg, Oregon

“I would recommend this course to every dentist who is about to or will build a new office.

“I have some clarity and confidence in starting our new project thanks to the detailed explanation by Dr. Tholen.



Working with A-dec, Dr. Roberts developed a plan, set a goal and invested in the future of her practice. The payoffs were significant with increases in patient appointments, billable procedures per month and new patients. Now this expanded CE design class offers a strategic blueprint to all dentists.



Space is limited, contact your A-dec dealer to sign up today! >

This new and expanded Continuing Education (CE) program will cover topics ranging from space planning and operatory flow, to practitioner health.

**After completing the course, participants will:**

- Develop a viable and credible practice vision that is financially beneficial and promotes practitioner health;
- Understand how to maximize their practices' financial opportunities, while minimizing risks associated with a new office project;
- Earn 12 CE lecture credits.
- Recognize the role of every necessary member of the office project team and the criteria with which to select each team member;
- Navigate common pitfalls with a remodeling or construction plan and learn how to avoid costly construction overruns;

**Reserve a spot, earn 12 CE credits, and achieve your vision.**

A-dec is pleased to offer this learning event for \$575. Contact your A-dec Territory Representative or Authorized A-dec Dealer to reserve your space in class.



**More about the Speaker, Dr. Mark Tholen.**

Dr. Mark Tholen is the former CEO of T.H.E. Design, Inc., and author of "A Guide to Designing the Elegant Dental or Medical Office...The Largest Marketing Tool of Your Career." T.H.E. Design was involved with the design and construction of more than 3,000 offices, from which the principles of dental office design described in his book were derived.

A graduate of the University of Texas Dental School at San Antonio, Dr. Tholen holds an MBA from the University of Texas. His years of practice and work with equipment and office design enhances his appreciation and knowledge of ergonomics, which he has shared as the Editor of Dental Office Design for Dentistry Today, as well as authoring numerous articles about dental office design and ergonomics.

**ADA CERP**® | Continuing Education Recognition Program

A-dec is an ADA CERP Recognized Provider. ADA CERP is a service of the American Dental Association to assist dental professionals in identifying quality providers of continuing dental education. ADA CERP does not approve or endorse individual courses or instructors, nor does it imply acceptance of credit hours by boards of dentistry. Concerns or complaints about a CE provider may be directed to the provider or to ADA CERP at [ADA.org/CERP](http://ADA.org/CERP).



Approved PACE Program  
Provider FAGD/MAGD Credit  
Approval does not imply

acceptance by a state or provincial board of dentistry or AGD Endorsement. The current term of approval extends from 6.1.15 to 5.31.18. Provider ID #300068

